

# ABSD Installation & Operation Manual



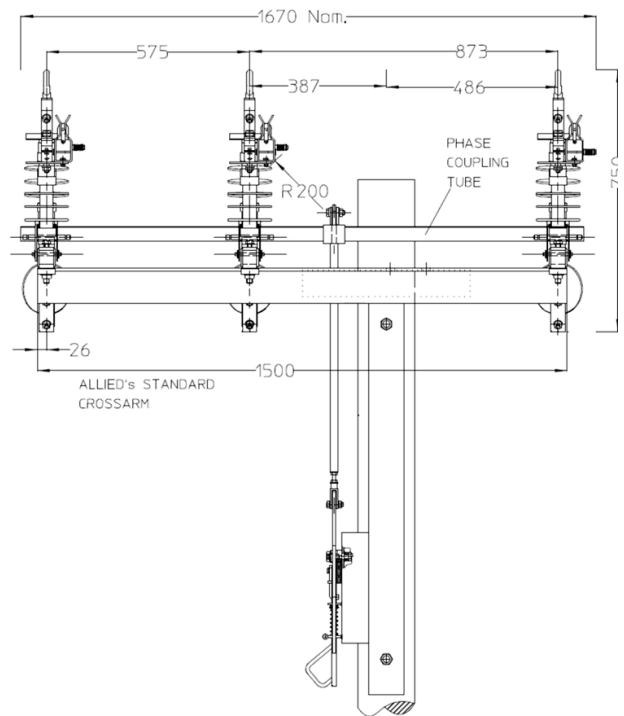
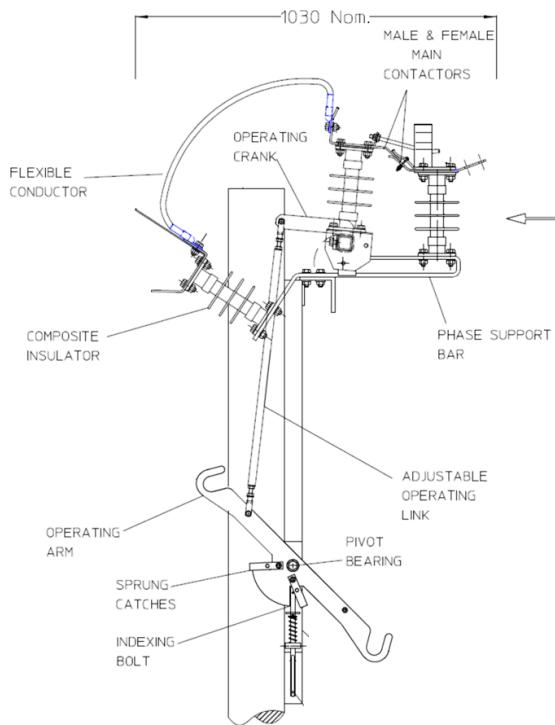
Allied **Insulators**



Assembled & customised to your specifications in NZ



Cat 2 – ABSD  
Dependent Manual



Distributed by



+64 9 274 3340 | sales@transnet.co.nz | www.transnet.co.nz

# ABSD Installation Kit

Main  
T-Piece



Crossarm



Coupling Tube



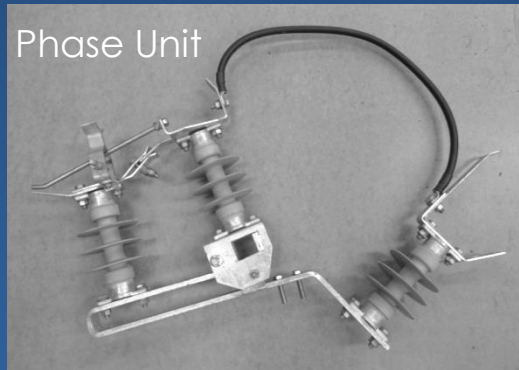
Operating Link



Crank



Phase Unit



## Bolt Fixings

M20 Pole Bolts (not supplied)

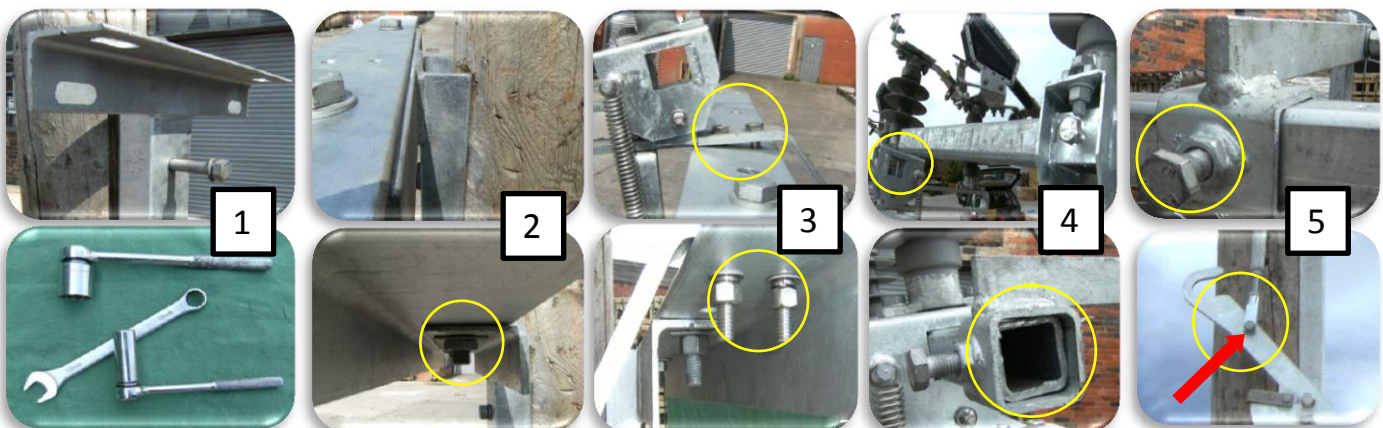
M16mm Bolt Pack

M12 Fixing Nuts & Washers for Phase Units

## 5 Step ABSD Installation (Tools – 19/30mm Socket Wrench, 19mm Ring Spanner)

1. Drill pole & fix **Main T Piece** to pole using 2 x M20 Pole Bolts.
2. Fix **Crossarm** (either Left or Right Handed depending on preference or obstructions) using 2 x M20 Fixing Bolts. Crossarm must be level
3. Mount **Phase Units** and loosely fasten M12 fixing nuts.
4. Slide in **Coupling Tube** ensuring **Crank** is fitted accordingly in line with handle & the crank bar is on top. Align the **Coupling Tube** ensuring sufficient overhang each end, tighten fixing bolts in the following order → [Phase Units to Coupling Tube] → [Phase Units to Crossarm]
5. Connect **Operating Link** to the switch handle, align vertically with **Crank** and tighten lock nuts. Do not over tighten, ensure free movement of the ABSD Handle at all times.

Adjustment should not be required as all ABSD's are factory set, but if necessary minor adjustment can be achieved via the threaded end fittings on the **Operating Link**. Ensure any adjustment is made evenly at both ends as required.



**Main Assembly Complete.** Please read the Commissioning Guide overleaf prior to operation.

# Commissioning & Operation



## Commissioning Checks

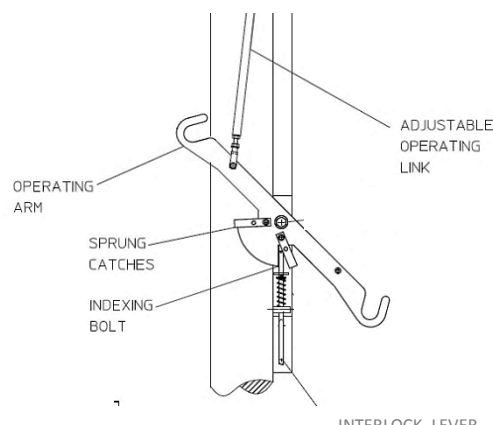
The ABSD has been bench tested and fully assembled, operated and checked prior to delivery to site hence commissioning on site should be a simple matter of checking for the following

- Ensure no damage has occurred in transit and nothing is obviously misaligned.
- Check all bolts for tightness and ensure free movement in handle and operating link.
- Check alignment of the main contacts
- Check all moving parts are adequately lubricated and free to move.

## Operating Instructions

### TO OPEN THE ABSD

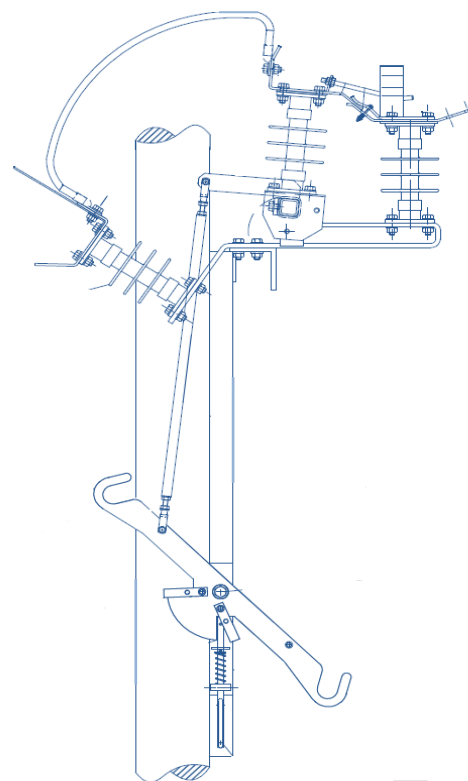
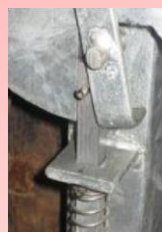
- PULL DOWN ON THE INTERLOCK LEVER (THE SPRING LATCH MOVES INTO POSITION TO RETAIN THE INDEXING BOLT)
- USING A DECISIVE POSITIVE ACTION PULL DOWN ON THE UPPER MAIN OPERATING ARM
- THE CONTACTS OPEN AND THE ARCING HORN ENGAGES AND WIPES THROUGH TO CLEAR THE LOAD CURRENT AS THE SWITCH OPENS.
- THE HANDLE REACHES THE END OF ITS TRAVEL AND THE INDEXING BOLT WILL HAVE RE-ENGAGED PREVENTING FURTHER OPERATION (SEE IMAGE)



### THE SWITCH CONTACTS ARE VISIBLY OPEN

### TO CLOSE THE ABSD

- PULL DOWN ON THE INTERLOCK BOLT (THE SPRING LATCH MOVES INTO POSITION)
- USING A DECISIVE POSITIVE ACTION PULL DOWN ON THE UPPER MAIN OPERATING ARM HOOK
- AS THE SWITCH MOVES OVER TDC THE ARCING HORN ENGAGES IN ADVANCE OF THE MAIN CONTACTS
- THE MAIN CONTACTS ENGAGE AS THE OPERATING ARM REACHES THE END OF ITS TRAVEL
- THE INDEXING BOLT WILL HAVE RE-ENGAGED PREVENTING FURTHER OPERATION.



### THE SWITCH CONTACTS ARE VISIBLY CLOSED

Distributed by



78 Cryers Road  
East Tamaki  
Auckland, 2013  
NEW ZEALAND

p: +64 9 274 3340  
f: +64 9 274 5490  
e: sales@transnet.co.nz  
w: www.transnet.co.nz



Allied Insulators